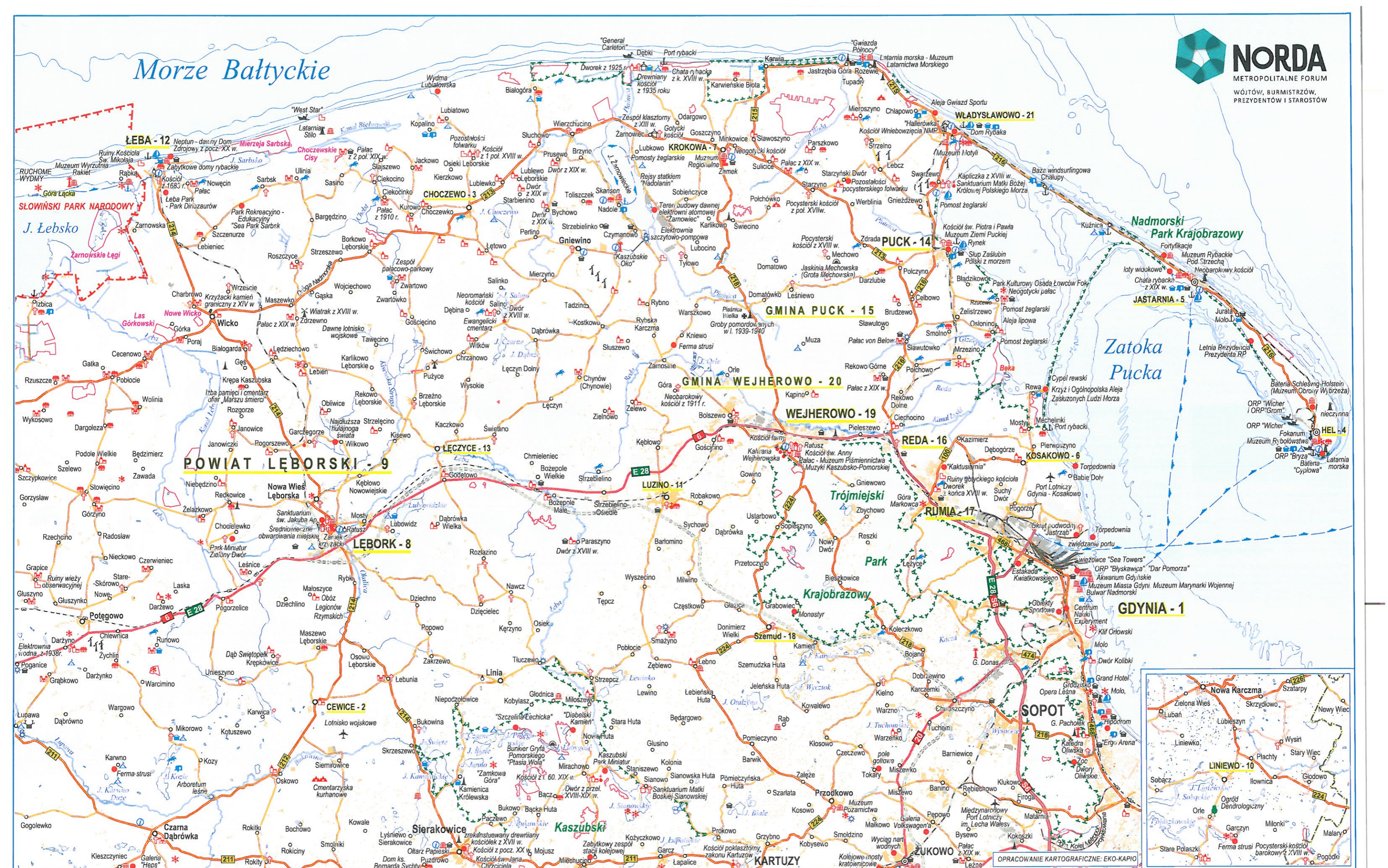


Morze Bałtyckie



<p>GDYNIA miejscowości należące do Metropolitalnego Forum Wójtów, Burmistrzów, Prezydentów i Starostów NORDA localities belonging to Metropolitan Forum NORDA</p> <p>las, tereny zabudowane, wody woods, buildings, waters Wald, Bebauungsfläche, Gewässer</p> <p>drogi roads Straßen</p> <p>linia i stacja kolejowa railway and railway station Eisenbahnlinie mit Bahnhof</p>	<p>rzeki, strumienie rivers, streams Flüsse, Bäche</p> <p>granica parku narodowego boundary of national park Grenze des Nationalparks</p> <p>granica parku krajobrazowego boundary of landscape park Grenze des Landschaftsparks</p> <p>granica rezerwalu przyrody nature reserve boundary Grenze des Naturschutzgebietes</p>	<p>hotel, informacja turystyczna hotel, holiday resort, tourist information Hotel, Erholungszentrum, Touristinformation</p> <p>kemping, pole namiotowe camping, camp site Campingplatz, Zelplatz</p> <p>wieża widokowa, punkt widokowy view-tower, view point Aussichtsturm, Aussichtspunkt</p> <p>zamek, pałac, dwór castle, palace, manor house Burg, Palast, Herrenhof</p>	<p>twierdza, ruiny fortress, ruins Festung, Ruine</p> <p>pomnik, miejsce pamięci monument, commemorative site Denkmal, Gedenkstätte</p> <p>zabytkowa kaplica, sanktuarium, klasztor historic chapel, shrine, sanctuary, monastery historische Kapelle, Sanktuarium, Kloster</p> <p>zabytkowy kościół, muzeum historic church, museum historische Kirche, Museum</p>	<p>ratusz, baszta, brama town hall, bastion, gate Rathaus, Bastion, Tor</p> <p>zabytek budownictwa regionalnego regional architecture monument Denkmal des regionalen Bauwesens</p> <p>grodzisko, cmentarzysko kurhanowe rampart, burial mounds Burgwall, Grabungstätte</p> <p>jaskinia, bunker, wieża ciśnieniowa cave, bunker, water tower Höhle, Bunker, Wasserturm</p>	<p>ośrodek jazdy konnej horseback riding centre Reitererholungs- und Reitzentrum</p> <p>lotnisko, fokarium airport, seal centre Flughafen, Wasserbecken für Seeuhne</p> <p>wiatrak, latarnia morska windmill, lighthouse Windmühle, Leuchtturm</p> <p>port rybacki, port jachtowy, przeprawa promowa port, yacht port, ferry, (ship) ferry Hafen, Segelhafen, Fähr-fähre</p>	<p>elektrownia wodna, elektrownia wiatrowa water power plant, wind farms Wasserkraftwerk, Windkraftanlage</p> <p>zabytkowy młyn, stacja wodna historic watermill, water drive house historische Wassermühle, Bootshaus</p> <p>ciekawy obiekt/miejsce interesting object/site interessante Objekte/Ort</p>
--	---	---	---	--	--	---



Download tourist application Gdynia and Northern Kashubia



Tourist attractions in Gdynia & Northern Kashubia

Would you like to ride a camel, stand face to face with an anaconda or see a Texas cactus up close? Maybe you would enjoy the thrill of walking in a burial ground that is thousands of years old? Or go for a trip to a spring that restores the memory? To experience something exciting and interesting which expands your horizons, you do not need to go far, there are plenty of attractions awaiting you in Gdynia and Northern Kashubia. Gdynia and the communes of the Kashubian region in northern Poland come under the NORDA Metropolitan Forum of Mayors, Presidents and Starostas, who combine their efforts to present tourist attractions and to welcome guests. Nature has generously endowed this region with wonderful coastal beaches, scenic cliffs, dunes, lakes and forests. However, no less interesting is what people have created. Everyone will find something for themselves – everyone is welcome!

1. GDYNIA www.gdynia.pl

Kościuszkowski Square and South Pier
This square meets a pier that plunges directly into the sea. The square itself contains a monument commemorating the visit of Pope John Paul II to Gdynia, the Polish Mariner Plaque, which is a fountain where you can relax on hot days. On the south side of the square you can find the South Pier with ships such as ORP Błyskawica and Dar Pomorza. We can also find there the only Passenger Ships' Alley in Poland.



Gdynia Aquarium
The facility is a zoo with the largest collection of aquatic animals – more than 1,500 specimens, which represent about 180 species, including green anacondas, giant octopus, blacktail reef sharks and the largest seahorses bred in the country.

Bulwar Nadmorski (Seaside Boulevard)
A promenade running between the sea and the slopes of the Kamienna Góra hill. This one-and-a-half kilometre long walkway includes a wide bike path.



Kamienna Góra
A picturesque hill in the heart of the city. From its top, you can admire the panorama of Gdynia and the Gulf of Gdańsk.

Kępa Redłowska Reserve
This is the oldest and one of the largest nature reserves (118.16 hectares) in Pomorskie Voivodeship. This oasis of wildlife at the centre of the town includes a forest complex and a unique cliff edge area. Nearby, there are also the former emplacements of an artillery battery built in the middle of the last century to defend the military port against attacks from the sea.

Gdynijski Szlak Modernizmu (Gdynia Modernism Route)
The unique modernist building complex of Gdynia Śródmieście (Downtown Gdynia) is listed as a historical site. There trails run across the area under protection of a conservation officer to facilitate sightseeing. Another one runs across Kamienna Góra, while at 3 Maja Street there is also a mini-museum of Gdynia Modernism.

Orłowo Pier
The first design of the Orłowo Pier was completed in 1934, although since that time its appearance has changed somewhat. Currently, this wooden pier is 180 metres long and gives visitors a grandstand view on the Gulf of Gdańsk and a very picturesque cliff. Nearby, there is also a fishing harbour where you can still buy fresh fish straight from a smack, and the house of the writer, Żeromski, where he spent some of his vacation time and wrote his famous novel entitled Wiatr od morza. Today, Żeromski's House houses a museum and the headquarters of Towarzystwo Przyjaciół Orłowa (Friends of Orłowo Society).

Kolibki
The Kolibki palace and park used to be a residence of royal and noble families. The first mention of Kolibki dates from 1323. In 1678, the place was visited by John III Sobieski, and Queen Marie Casimire Louise de La Grange d'Arquien, known in Poland as queen Marysieńka, who also spent some time there. Now there is a Cultural Centre TuBaza.

Torpedo research station in Babie Dół
The facility was built in 1941 as a part of the Luftwaffe research centre to test and manufacture torpedoes during World War II. Today, the remains of the structure are not accessible by land, but you can view them from the Babie Dół beach.



Muzeum Obrony Wybrzeża (Museum of Coastal Defence)
It is located in a fire control tower and one of the Schleswig-Holstein artillery emplacements. This huge battery dates to 1940 and, with its diameter of 406 mm, has the largest calibre of any coastal battery in the world. Along the Hel coast there is also a visitor's trail leading to the most interesting military facilities of this region.

1. GDYNIA www.gdynia.pl

2. CEWICE www.cewice.pl
"Świętopelk" Oak
"Świętopelk" Oak in Krepkowice is considered to be one of the oldest trees of this species in Poland, and it is estimated to be about 700 years old. It is about 8 m in circumference and approx 20 m tall.

Nativity of the Blessed Virgin Mary Church in Bukowina

The Nativity of the Blessed Virgin Mary Church in Bukowina was built in 1728. This half-timbered building has changed in appearance due to damage caused by warfare during World War II and the post-war renovation, which largely obliterated its original design. The few noteworthy historic objects that have endured include: an 18th c oil painting in the altar depicting the scene of the crucifixion of Christ, two epigraphs from the 1739 and 1743 devoted to members of the Weiber family (former owners of the village) and two candlesticks from 1795.

"Karwickie Źródlika" Nature Reserve
The reserve stretches covers a part of forests with natural springs of the Unieżyńska River near the village of Karwica. The reserve is located on the southern edge of the Święte forest district. Here, you can find rare species of flora and fauna, and there are areas of bogs with numerous waterways overgrown with alders. The water, bubbling out of slopes covered with beech trees that are more than a century old, flows down and feeds the river. "Karwickie Źródlika" is a perfect place for nature classes, as well as for hiking and other recreation.

3. CHOCZEWO www.choczewo.com.pl

Stilo Lighthouse
The lighthouse was built between 1904 and 1906 at the top of a dune, about a mile from the sea. The hexadecagonal, metal tower, which offers beautiful views of the surroundings, is one of only two such lighthouses in the country that are made completely of metal.



Beaches
The commune is known for its wide sandy beaches, the most beautiful ones to be found in Lubiatowo, Sasino and Słajszewo. They provide perfect conditions not only for swimming and sunbathing, but also for long walking and horse riding.

Church in Osieki Łębońskie
The parish in Osieki Łębońskie is more than 900 years old and is one of the oldest in Pomerania. The first church stood here in the early twelfth century, and in the current church there is a fourteenth-century baptismal font. Down in the crypt underneath the church is the final resting place of the remains of former owners of the von Krockow family farm.

4. GNIEWINO www.gniewino.pl
The "Kashubian Eye" complex with a lookout tower is primarily a 44-metre-high observation tower, from which one can admire the remains of the nuclear power plant and the tank of Poland's largest pumped-storage power station "Zarnowiec". The observation deck of the tower can be reached by climbing 212 steps or taking the lift. There are figures of Stoilems - Stoilems are mythical giants and athletes who, according to Kashubian legends, used to inhabit the Earth.

"Zagroda Górska i Rybacka" heritage park in Nadole
presents a team of richly furnished nineteenth-century buildings, interactive activities organized for children and teenagers, as well as numerous outdoor events make the park an unusually attractive place to relax and learn.

5. HEL www.gohel.pl
Wieżka Street
Along the street there are many typical, half-timbered houses from the eighteenth and nineteenth centuries. The frontages were created using bolted timbers and no nails. Another distinctive trait of an old Hel home is the flared chimney, originally intended to facilitate the drying and smoking of fish.

Muzeum Rybołówstwa (Museum of fishery)
This includes, among other things, Poland's only open-air museum of traditional fishing boats and a lookout tower. The museum building is the oldest surviving building in Hel; it was built in the fifteenth century as a Gothic church.

Fokarium (Seal Sanctuary)
The complex consists of several swimming pools inhabited by seals. It is a part of the Marine Station of the University of Gdańsk and its activities include the renewal of the seal population in the Baltic Sea.

6. JASTARNIA www.jastarnia.pl
Open-Air Museum of the "Jastarnia" Resistance Centre Fortifications
The fortifications were built in 1939 to protect the Hel Fortified Zone on land. The museum consists of four main heavy shelters and light shelters. Moreover, anti-tank and anti-personnel obstacles, as well as field fortifications have been restored.



7. KARSIN www.karsin.pl
Wiele
Village owing to its famous Calvary it has been for years the main tourist and cultural centre of this part of Kashubia.

8. KOSAKOWO www.kosakowo.pl
Mechelinki
This village sits alongside a beautiful, sandy beach adjacent to the Mechelinki Łąki Seaside Landscape Park, where sea holly, which under strict nature protection, can be found. The Mechelinki cliff offers a unique view over the sea and of the old torpedo launcher in Babie Dół. Another attraction is a new Fishing Harbour with its 180-metre-long pier.



Fishing Cottage
The cottage was built in 1881 from the remains of wrecked ships discarded by the sea. Today, it houses a museum where visitors can see fishing equipment from the fifteenth century.

11. POWIAT ŁĘBOŃSKI www.powiat-leborki.com

Dinosaur Park
Nowecin is an attraction surrounded by ponds, bogs, forests and waterfalls, and while out walking the paths, bridges and catwalks, you can come across about 100 replicas of saurian reptiles.

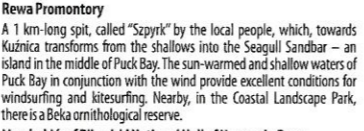


The "Sea Park" recreational and educational facility in Bąrsk
is the first such park in Poland, where you can view a 3D prehistoric aquarium, visit the maritime crafts' museum, participate in feeding and training of American fur seals and see giant models of marine animals.

8. KOSAKOWO www.kosakowo.pl

Miniature Park in Chocielewko
Visitors to the park can enjoy the largest "Eiffel Tower" in Pomerania and feats of wooden and brick architecture including a pyramid, a sphinx, Abu Simbel temple, Mount Rushmore, a highland cottage, Jaszczurówka Chapel, Bismarck Stone, Rozewie and Ustka lighthouses, as well as the Opatowska Tower.

12. LINIEWO www.liniewo.pl
Church in Garczyn
The parish of Garczyn was established in the twelfth century and is one of the oldest in Pomerania. The present St. Andrew the Apostle's Church was founded in 1540, and today you can see a coffin portrait of Katarzyna Garczyńska of the Doregowski family from 1629, a late Baroque baptismal font from the eighteenth century and a Madonna and Child sculpture from the sixteenth century. Near the church there is a Księga Góra hill, on which a borough belonging to the Garczyński family is believed to have been located in the thirteenth century.



Manor house and park complex in Paraszyno
The manor house and park in Paraszyno are very rare examples of courtly designs associated directly with open landscape interiors, utilising the advantages of the natural landscape of the Leba valley. The house was probably built at the end of the eighteenth century, and then partly rebuilt around 1902. One outstanding architectural merit is the interior, typical for the turn of the eighteenth and nineteenth centuries, maintained in an unmodified condition.



13. LUZINO www.luzino.pl
Kashubian and Open-Air Museum
This is located at Ofiar Stutthofu Street, within a police station, where you can find everyday objects typical of this former Kashubian village. The museum has both indoor and outdoor sections.

9. KROKOWA www.krokowa.pl
Church and convent complex in Zarnowiec
The beginnings of the construction of the Zarnowiec temple are related to the approval given by Duke Mściwój II to the newly created sisterhood of Ościerans in 1279. The interior of the church comes mainly from the seventeenth and eighteenth centuries. It includes, among other things, a high altar, side altars, choir stalls, a pulpit and a baptismal font. The Pietà, dating from 1430, is also one of the most important monuments of the temple.

10. ŁĘBORK www.lebork.pl
The Pomeranian Way of St. James
Łębork is another city popular among hiking lovers, for it is situated on the Pomeranian Way of St. James. Whilst wandering around, it's worth to pay a visit to a sanctuary with the relics of St. James.



Boating and yachting marinas
There are three marinas on Zarnowiec Lake, equipped with toilets, rest areas and piers. One is near the Brzywno resort, in a pleasantly wooded area, while the other two are in Lubkowo. Pedal boats and sail boats are available for hire.

Święcino battlefield
The battle that took place on September 17, 1462 in Święcino had enormous military significance, depriving the Teutonic Knights of troops on the left bank of the Vistula. It was a turning point in the Thirteen Years' War. Today, on the site of the former battlefield, there is a monument commemorating this event. Moreover, there are staged battles organised there every year.

14. ŁĘBA www.leba.eu
Dunes of the Słowiński National Park
The highest peak of the Polish Sahara is Łącka Góra, reaching a height of about 42 metres. In the park, which is a World Biosphere Reserve, a part from the shifting sand dunes,

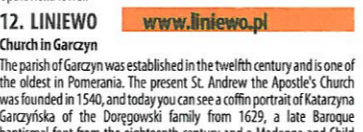
bird habitats are also protected and where you may see more than 200 species. One of the attractions of the park is a rocket launcher in the early 1940s the area was a Nazi training ground, where anti-aircraft and ballistic missiles were tested.



15. ŁĘCZYCE www.leczyce.pl
Palace and park complex in Godętowo
The complex located on the edge of the village of Godętowo. The palace dates from about 1800, being horseshoe shaped when seen from above, brick-built, and two-storey with a usable attic. The house is surrounded by a park, and by the main avenue is a granite boulder with an inscription containing the names of former owners. The facility also includes a historic old barn where on a cornerstone is engraved some initials and a date: VS 1868. The palace was restored in 2009, and is currently a hotel and restaurant.



16. PRZYWIDZ www.przywidz.pl
Przywidz Commune
The commune is located about 30 km from Tricity. Unspoilt nature, no industry and charming landscapes provide ideal conditions for relaxing at any time of year, as well as for sports such as hiking, biking, horseback riding, water sports, and winter sports. In the summer, one can enjoy a sunbath on a guarded beach or a swim in a lake. Cyclists can ride along one of five marked bike routes. During the winter, one can make use of professional ski slopes in Przywidz and Trzępowo.



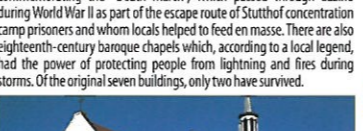
17. TOWN OF PUCK www.miasto.puck.pl
A revitalised old market square with a medieval urban layout and houses from the eighteenth and nineteenth centuries, as well as a town hall from the nineteenth century. Looking down on the market square is a church tower from the fourteenth century. Some of the buildings in the square were modelled on the patrician houses in Gdańsk.



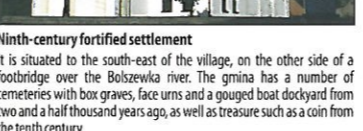
18. PUCK COMMUNE www.gmina.puck.pl
Neo-Gothic palace in Rzewcewo
Built in 1840 by the von Below family, after World War II it became an agricultural school. Today it houses a hotel.



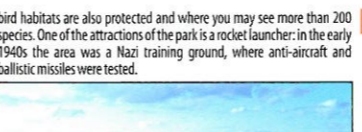
19. REDA www.reda.pl
Family Town Park
This investment was implemented as part of the revitalisation of Reda's public spaces. It is a perfect place to rest and relax, and it has a skate park, which is one of the best in the Tricity and enjoys tremendous popularity. In addition to the skate-park, there is a small amphitheatre, children's playground, weight training square, grill, fountains, the main avenue with its beautifully flowering Japanese cherry trees and lots of bike and walking paths. There is also a beach on the Reda river with sand imported from the sea.



20. RUMIA www.um.rumia.pl
Ruins of St. Stanislaus' Church
A total visit for anyone who enjoys old cemeteries. The former fifteenth century Gothic church survives today only as the ruins of its chancel, surrounded by an old cemetery with tombstones dating from the late nineteenth and early twentieth centuries.



21. WEJHEROWO COMMUNE ug.wejherowo.pl
ArtPark in Bolszewo
ArtPark is a recreation and sports zone in Bolszewo. In just one place, on the area of over 2 hectares, there are a lot of attractions for children, teenagers and adults. It is also the place where numerous concerts, open-air painting events and exhibitions are held.



Yacht Port in Leba
Yachts from around the world call in at this port. This is where Captain Krzysztof Baranowski began his around-the-world trip. In the Leba yacht port you can find a replica of Świerłowa Tratwa, a spruce raft constructed to commemorate the solo sailing trip made by a Leba citizen, Andrzej Urbańczyk, who, in 1957, reached the shores of Sweden on a raft 10 m long and 4.5 m wide.

Hall of the Presidents of the Republic of Poland
At Kościuszkowski Street anyone may put their hand on the handprints of Ryszard Kaczorowski, Wojciech Jaruzelski, Lech Wałęsa, Aleksander Kwaśniewski, Lech Kaczyński or Bronisław Komorowski.

21. WEJHEROWO COMMUNE ug.wejherowo.pl
Cradle of the Naval Aviation Squadron
In July 1920, a Naval Air Station was established in Puck, and today the historical landscape of Puck includes hydroplanes with Polish red and white symbols.

22. WEJHEROWO COMMUNE www.wejherowo.pl
Kashubian Philharmonic
Is a modern, multi-purpose facility with a room used for film screening, concerts and performances, a gallery, a conference room, and a coffee shop. There is a cultural centre with choir, theatre, dance, and workshop rooms. The building itself is interesting in terms of architecture, as it relates to the shape of the hull, thus emphasizing the maritime tradition of Wejherowo.

23. WEJHEROWO COMMUNE www.wladyslawowo.pl
Sports Hall of Fame
Every year sees the addition of new stars from people of the various fields of sport. Jerzy Kulej, Irena Szewińska, Władysław Komar, and Michel Platini, are among those having bronze plaques here. It is also a promenade to the sea.



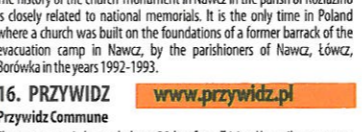
24. WŁADYSŁAWOWO www.wladyslawowo.pl
Fishing Port
Located on the edge of the open sea, it is one of the largest fishing ports on the Baltic. The Fishing Port provides repair services, fulfils the function of a sailing marina and is also a border crossing point.



25. WŁADYSŁAWOWO www.wladyslawowo.pl
Fisherman's House Tower
Two terraces at the altitudes of 45 and 63 meters are open to visitors. The tower also houses a butterfly museum.



26. WŁADYSŁAWOWO www.wladyslawowo.pl
Ocean Park
Walking on the bottom of the ocean is just one of the attractions of the park. In here, visitors can find various species of whales as life-size models, and there are also playgrounds, a raft of storms, and a climbing wall.



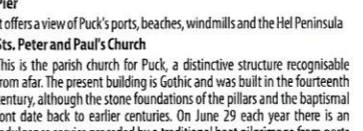
27. WŁADYSŁAWOWO www.wladyslawowo.pl
Rozewie Lighthouse
Originally built in 1821, although since then the height has been increased twice. Today it is 33 meters tall and still sends its light out into the sea. It is a listed building and houses the Lighthouse Museum.



28. WŁADYSŁAWOWO www.wladyslawowo.pl
Gwiaździa Północy (Star of the North)
This is the northernmost place of Poland, located in Jastrzębia Góra, and marked by an obelisk in the woods near the centre of the village. The cliff in Jastrzębia Góra soars to a height of 33 metres above the sea.



29. WŁADYSŁAWOWO www.wladyslawowo.pl
St. Anne's Franciscan Convent Church
The Passion and Marian Sanctuary – the largest "treasure" of the church is the miraculous image of Our Lady of Wejherowo, Health of the Sick in Soul and Body, crowned by Pope John Paul II. The monastery includes the crypts of the Wejheres.



30. WŁADYSŁAWOWO www.wladyslawowo.pl
Assumption of the Blessed Virgin Mary and St. Catherine of Alexandria's Church
For a respite and some reflection, what could be better than the neo-Gothic church at Gdańska Street, which has a soaring tower that does not go unnoticed. This church is a symbol of Reda, and is also included in the town's emblem.



31. WŁADYSŁAWOWO www.wladyslawowo.pl
Remus Communal Regional Chamber in Lebnio
The Commune Museum of Kashubia has a collection of some 1,000 exhibits, including those from areas like art, archaeology, ethnography, history, numismatics, technology, nature, and much more. The collections document the rich tradition of the Leszków land and consist of unusual and beautifully preserved furniture, tools, and archaeological exhibits, as well as publications. In addition, lessons in the Kashubian language are given, helping to broaden the knowledge of materials used and the spiritual culture of Kashubian residents.



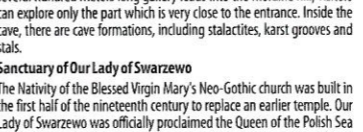
32. WEJHEROWO www.wejherowo.pl
Kalwaria Wejherowska (Wejherowo Calvary)
Twenty five chapels located on the hills covered in forests around Wejherowo, and one in the centre of the town. A legend has it that the distances between them are equal to those between the respective stages of Christ's path in Jerusalem (5936 steps). The Wejherowo Calvary hills are a place for indulgences, Way of the Cross services and the staging of the Passion. The Calvary of Wejherowo is considered one of the best restored monuments in Poland using EU funds.



33. WEJHEROWO www.wejherowo.pl
St. Anne's Franciscan Convent Church
The Passion and Marian Sanctuary – the largest "treasure" of the church is the miraculous image of Our Lady of Wejherowo, Health of the Sick in Soul and Body, crowned by Pope John Paul II. The monastery includes the crypts of the Wejheres.



34. WEJHEROWO www.wejherowo.pl
World of Labyrinths in Blizny
Whilst visiting the Przywidz Commune, it is worth to pay a call at the unusual World of Labyrinths, cut out of a maze field in the town of Blizny.



35. WEJHEROWO www.wejherowo.pl
World of Labyrinths in Blizny
Whilst visiting the Przywidz Commune, it is worth to pay a call at the unusual World of Labyrinths, cut out of a maze field in the town of Blizny.



36. WEJHEROWO www.wejherowo.pl
World of Labyrinths in Blizny
Whilst visiting the Przywidz Commune, it is worth to pay a call at the unusual World of Labyrinths, cut out of a maze field in the town of Blizny.

